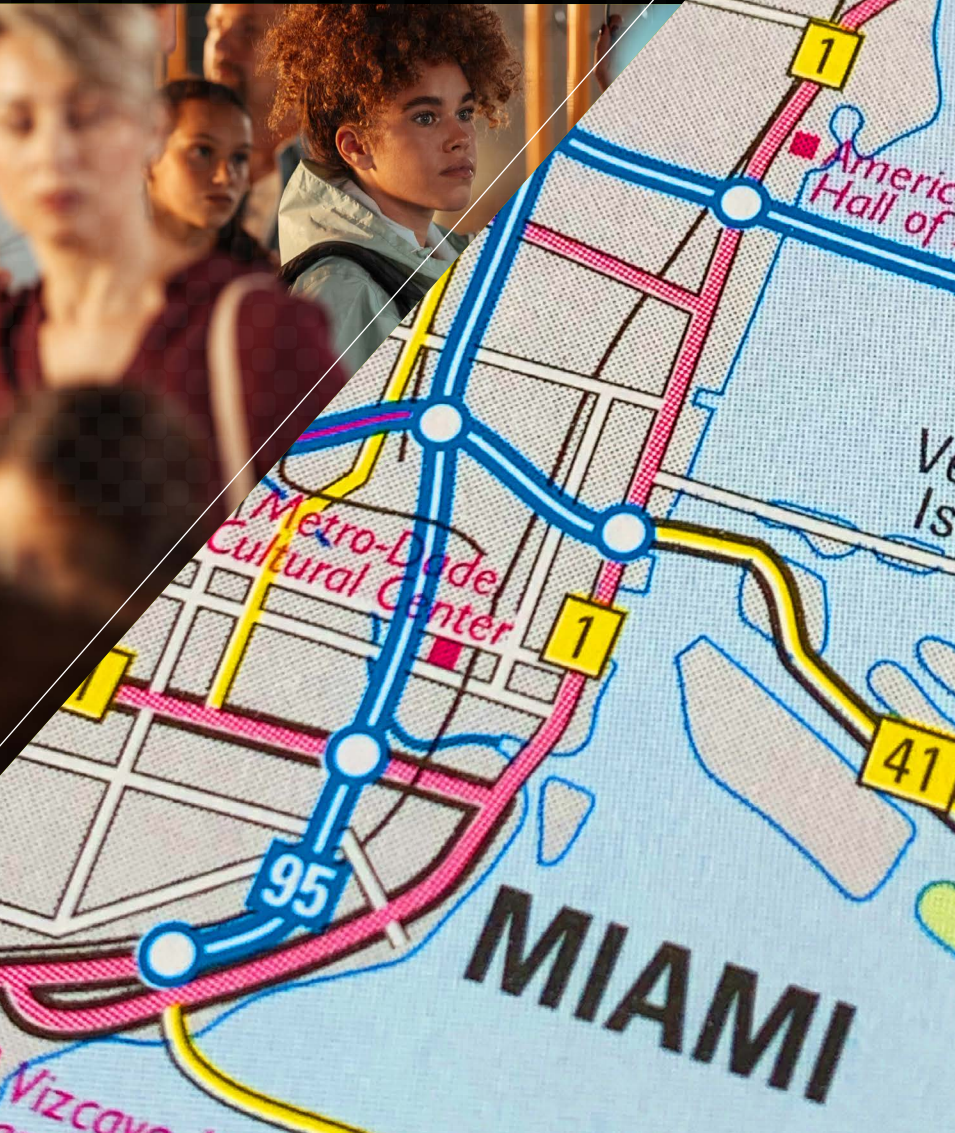


THE MIAMI FOUNDATION

ISSUE SPOTLIGHT

TRANSPORTATION AND MOBILITY IN GREATER MIAMI



As a County with a population of over 2.7 million people, and over 34 municipalities spanning almost 2,000 square miles, how we get around Greater Miami matters.

But what does transportation and mobility mean for Miami-Dade County? We know it's about more than just getting from point A to point B. It shapes what jobs we have access to, how clean our air is, and how safely our kids can ride their bikes. Better public transit and more connectivity can improve the future of our cities making them greener, faster, and safer. Let's dig into what our current transit options are, who shapes them, and what are our opportunities to do better.

FIU | Jorge M. Pérez
Metropolitan Center

This brief was prepared by The Miami Foundation in partnership with FIU's Jorge M. Pérez Metropolitan Center as our commitment to help Miamians learn and engage with issues that matter most. This research was strengthened by insights from Alice Bravo and leaders from Transit Alliance, County's Department of Transportation and Public Works, and Miami-Dade Transportation Planning Organization.

Read on to explore what we learned from the data and from conversations with experts in this space.

At A Glance: The Transportation & Mobility Ecosystem

When we think about this issue, we need to consider both transportation and mobility in Greater Miami. But what is the difference?

“**Transportation** is the wheels on the track, the bus, and the car, or the road itself...whereas **Mobility** is about giving people the choice or the freedom to get around, however they wish to get around.”

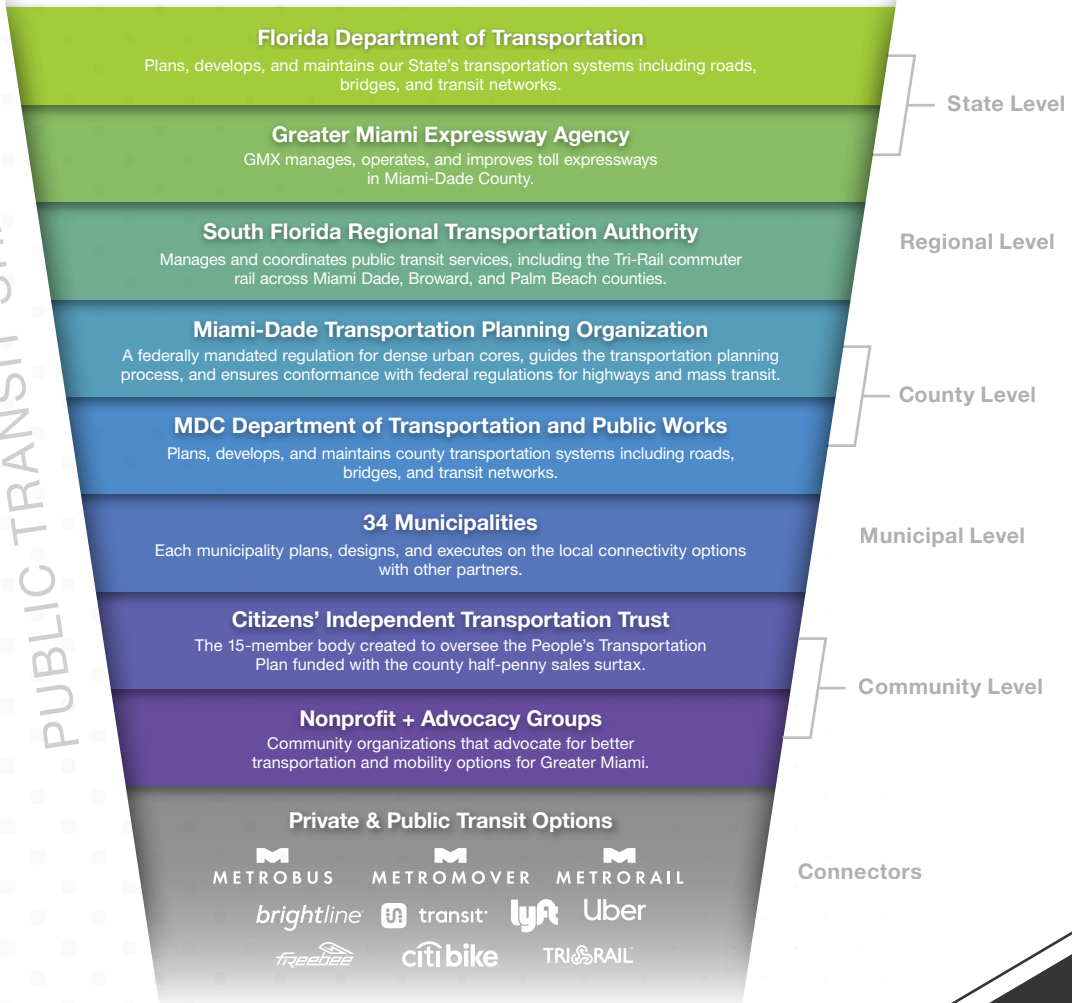
- Transit Alliance

Miami’s Transportation Shapers and Connectors

Greater Miami has a robust infrastructure and agency landscape to enable safe, accessible, and quality options for all. Our transportation systems are shaped by everything from state-level planning agencies to community-based organizations working locally in our neighborhoods.

Click on each one below to learn more!

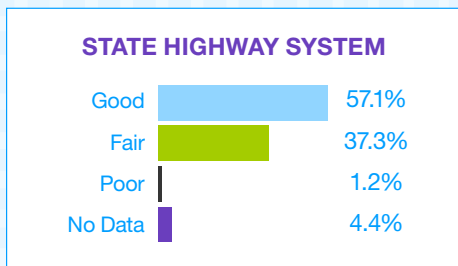
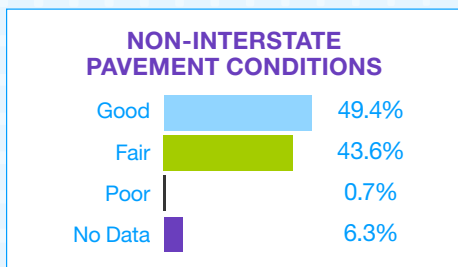
PUBLIC TRANSIT SHAPERS



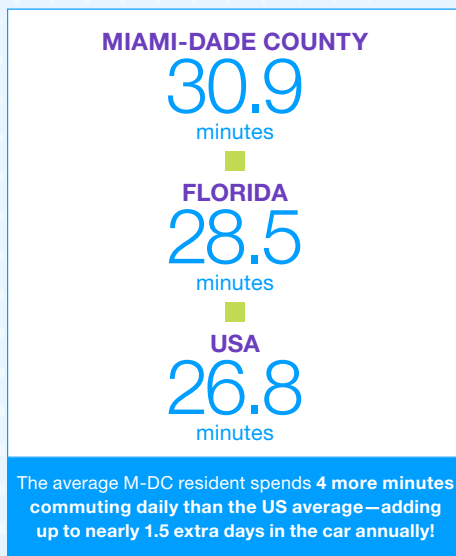
Where We Stand: How Do We Compare to Others?

We examined some standardized scores to see how we fare on infrastructure, including quality of roads, congestion, and availability of transit options. While the road infrastructure in M-DC is relatively good, the infrastructure hasn't been able to keep up with the growth of the area. Traffic congestion and increasing commuter times have become a common occurrence.

Quality of Roads



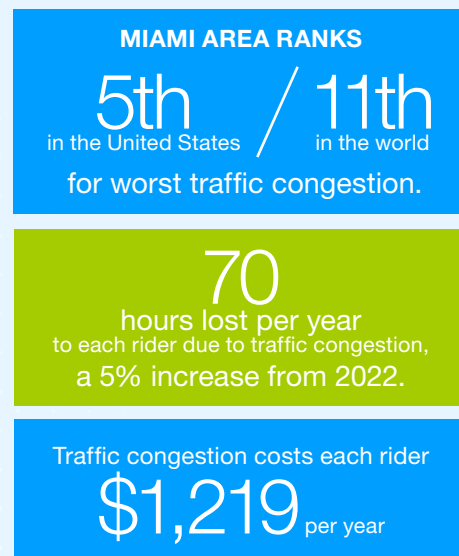
Average Work Commute Time



Source: Miami-Dade TPO. (2022). Transportation Performance Trends in Miami-Dade County, May 2022

Source: Census Bureau. (2023)

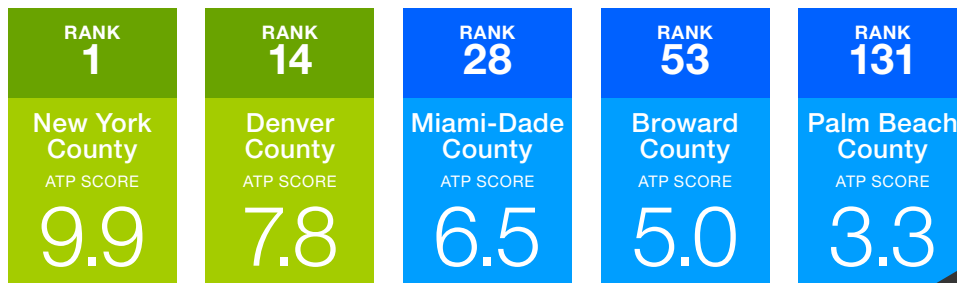
Traffic Congestion



Source: Pishue, B. (2023). 2023 INRIX Global Traffic Scorecard with Q1 2024 Update. INRIX.

All Transit Performance Score

The ATP score looks at connectivity, frequency, and quality of transportation. **Miami-Dade County ranked 28th in the US of 268 peer counties.**



At a Glance: Our Transit Options

Miami-Dade County's Transit System is the 15th largest in the country, with a total of 80,168,640 trips completed across the four main transit modes: Metrobus, Metrorail, Metromover, and the Special Transportation Service (STS).

STS is a shared-ride public transit service in compliance with the Americans with Disabilities Act.

M METROBUS



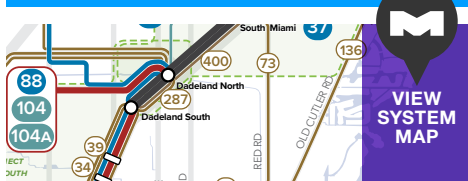
FARE starts at **\$2.25**

70 Bus Routes:
57 directly operated by DTPW
and 13 contracted routes

9 Express Routes

8,000 Bus Stops

2,900+ Park & Ride
Parking Spaces



M METRO RAIL



FARE starts at **\$2.25**

24.8 Miles of Dual Track

23 Metrorail Stations

136 Metrorail Cars

9,581 Park & Ride Stations



M METROMOVER

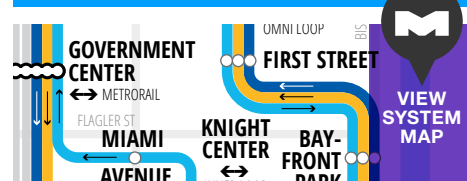


FARE **FREE**

4.4 Miles of Track

21 Metromover Stations

29 Metromover Cars



What About Bikes?



Biking could help reduce the congestion load in Miami-Dade but the infrastructure has a long way to go to encourage more riders. While we have about 201 miles of bike lanes in the County, only 3% of these are considered protected. A majority of the biking happens on shared paths or “sharrows” suggestive of “shared” and the “arrows” on the road. [Studies](#) have shown that this is much riskier for bikers and doesn't afford the same protections of separate bike lanes.

Where We Stand: What's Our Mobility Experience?

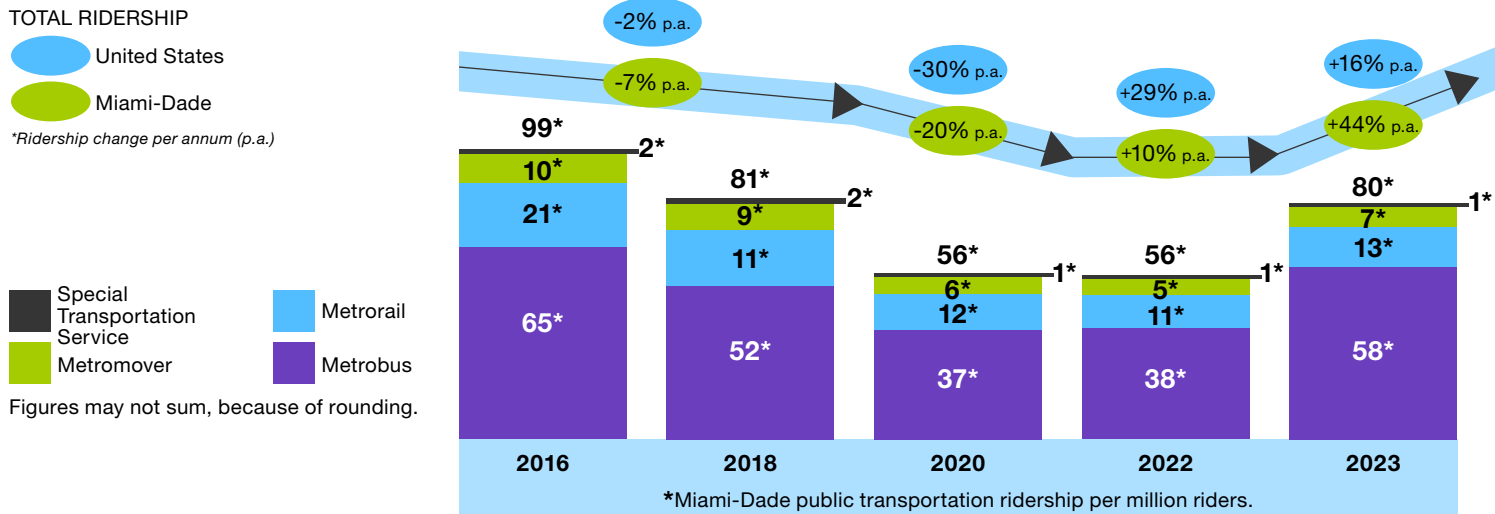
Research shows transit users value frequency, reliability, and shorter travel times. Despite a robust ecosystem of transit options and agencies, our mobility metrics reveal persistent challenges including limited connectivity and unreliable service hours. Read on below to learn more.

Sources: Bromley et al. (2010); Binkovitz, Leah. (2016).

Let's look at how our transit options in M-DC fare through the in-depth analysis from the [Transit Mobility Scorecard](#) produced by the Transit Alliance in 2023. The scorecard analyzes the performance of county mobility options and assigns them a grade from A to F. The scores are based on a range of criteria such as ridership, on time performance, and cost per rider.

<p>M METROBUS</p> <p>D</p> <ul style="list-style-type: none"> ■ 32.4% of rides on-time ■ 20.4% over 10 minutes late ■ 29% of bus stops have shelter for riders. 	<p>M METRORAIL</p> <p>C</p> <ul style="list-style-type: none"> ■ 49.2% of rides were on time, with unreliable weekend and off-peak service. ■ Riders found pricing and discounts confusing. 	<p>M METROMOVER</p> <p>B</p> <ul style="list-style-type: none"> ■ 47% of rides delayed by 2 to 10 minutes. ■ Limited connectivity to areas like Wynwood and Miami Beach reduced this mobility score.
---	---	---

Public transit ridership in M-DC was declining at a steady rate even pre-Covid. However, we are seeing a slight uptick in ridership, especially with the Metrobus showing the biggest improvement from 2022 to 2023 (38% increase).



WHO RIDES PUBLIC TRANSIT AND WHAT IS THEIR EXPERIENCE?

	<p>38.3% of public transportation users work in the service industry.</p> <p>\$28,798 the median earnings of public transportation users.</p>		<p>46 min the mean travel time to get to work using public transportation.</p> <p>34.1% of public transportation users whose trips often take 60+ minutes.</p>
--	---	--	--

Celebrating Wins, Acknowledging Barriers

The ambition of rapid transit expansion and improving mobility in Greater Miami is often complicated by barriers to funding, regulatory processes, and the short-term cycles of public office. Looking ahead, we will also need greater progress in the other building blocks of our community such as: more affordable housing in transit-connected neighborhoods; increased street safety, and increased tree canopy to motivate more comfortable walking experiences in a hot climate like ours.

We might be a few steps away from our ideal system, but we have a lot to celebrate as a community! In the recent straw ballot in the local elections, nearly 80% of participating residents voted in favor of rapid transit expansion, showing the resounding support and demand from our community. Thanks to the collaborative efforts of many partners, here are some highlights of wins for a better connected Greater Miami:



SMART PLAN: Adopted in 2016, the **The Strategic Miami Area Rapid Transit (SMART) Program** aims to advance rapid transit corridors and transit-supportive projects for the county. This plan saw two big wins — the launch of the South Dade Transitway Corridor, and, as of October 2024, the Federal Transit Administration's pledge to fund the **Northeast Corridor Rapid Transit Project** with up to \$389M in federal funding. These expansions can improve the bus experience through dedicated lanes which can move faster and take the load off the main highways.



BETTER BUS NETWORK: In November 2023, Miami-Dade County rolled out the **Better Bus Network**, the first redesign of bus routes in forty years, to offer better service to our residents by increasing reliability and frequency.



THE UNDERLINE: By repurposing the 10-mile track of unused land under the Metrorail as a vibrant, accessible, and inclusive community-space, **the Underline is transforming the mobility experience in Miami by providing more walkable and bikeable routes.** This long-term collaborative project has been a testament to how public-private partnerships can foster effective change.



INNOVATIVE SOLUTIONS: The County has been advancing the mobility experience in M-DC using technology and innovation. To simplify fare payments, they're adopting new technologies (account-based ticketing), and interfacing with third-party apps (like Token Transit) for riders' convenience. Solutions like **Metrolink** and **Metroconnect** are helping improve last-mile and on-demand connectivity in addition to partnering with private options like Uber to fill the gaps in public-transit service.

Photo courtesy of: [Miami-Dade County SMART PROGRAM Implementation Plan](#)



Learn More.
Act More.

“ People need to understand that they are both the solution and the problem of our transportation issues. Their choice on what mode and how they’re using the network will directly influence them in the totality of the network and also their ability to work...”

Are you in a single occupant vehicle?
Ask yourself...could you carpool?

- Miami-Dade Transportation
Planning Organization

LEARN
MORE

ACT
MORE



DIG DEEPER

into the **SMART Plan** and its roll-out for what’s next in our region’s rapid transit expansion.



EXPLORE

Miami-Dade TPO’s interactive tools like the Walk to School Planner and the Transit-Oriented communities tool.



LEARN

how our transit options fared in **Transit Alliance’s Mobility Scorecard** and read the County’s progress in the latest **DTPW Annual Report**



ASK

more questions to understand the transit ecosystem better through the newly launched **TransitConnections** community engagement initiative of the County.



COMMIT

to walking, biking, or riding public-transit as best as you can. If you commute to work in a car, explore car-pooling.



SERVE

become a **CITT Transportation Ambassador** for your community: **Apply here**



STAY CONNECTED

Follow these profiles to stay informed with the latest news on what’s keeping Miami-Dade moving:

[GO MIAMI DADE](#) [TRANSIT MIA](#) [MIAMI-DADE TPO](#)

DOWNLOAD THE
GO MIAMI-DADE TRANSIT
MOBILE APP

